

COOPERATIVE CONNECTIONS



Hooked on Fishing

**South Dakota Fish
Hatcheries**

Pages 8-9

**Methods of
Moving Structures**

Pages 12-13

*Photo Credit:
Markus Erk*

Building Expansion, Year end 2022 and 2023 Annual Meeting



Brad Schardin
General Manager

Snow, snow go away come again some other day!!! I know that's not how that rhyme is written, but there is no doubt that we have had our fair share of snow days this winter. We would all agree that we needed moisture after a long, dry summer in 2022, but none of us would complain if it waited until June or July to bless our ground at this stage of the game. Fortunately, our line crews have been able to work their way around the system to manage and repair line problems,

perform maintenance, and take care of any outage situations that we have had. Thanks to all of you for your patience and for our operations, member services and office employees for taking care of our members in such an expedited and efficient manner this winter season.

Progress continues to be made on our office expansion south along I-29 and east on exit #68. This addition has been part of our strategic planning process for the past six years, and we are now finally getting to see some progress being made on the main steel structures, outside preformed concrete walls and the geothermal heat pump wells being drilled for the heating and cooling system. Some delivery delays for the major structural steel and precast sidewalls will push our final completion date back to later this fall, but our contractors, engineers and architects are working hard to get this facility finalized. Your board of directors will be asking our members for approval on a change of principal office location for official mailing, notifications, and overall operations for your electric cooperative to this new facility located at our Lennox address during our annual meeting set for June 8th. All other office/warehouse locations will continue to operate as normal, but we would like to make sure any official notifications and documentation is provided to the Lennox mailing address. We will provide more information on that change of location in our 2023 Annual Meeting Report that will be mailed to all Southeastern members.

Our year end 2022 financial statements have been finalized and reported to the Rural Utilities Service (the old REA program) our primary financing agent and the Cooperative Finance Corporation, (CFC) our supplemental lending agency. We are proud to note that we met all our financial requirements set forth by our lending agencies and we are moving forward with our rates adopted 6 years ago by your board of directors. We continue to see growth in every area of your electric

cooperative from large/small commercial, farm, hogs, dairy, irrigation, rural and urban residential services. We connected a record 1,245 new services boosting our total services to 22,204 which was another 5.6% increase. With those new services and upgraded miles of old line we added an additional \$15 million of electric plant to serve your current and future electrical needs. Our total assets serving our members with affordable, reliable, and dependable electric service increased by 10.5% to just over \$223 million. With all those assets in place, we sold a record amount of electricity to our members in 2022, which increased just over 5% again last year for your electrical needs 24 hours a day, 365 days a year. We will provide you with more detail in our 2022 Annual Report on our historical operations and the current study we are conducting to review our overall cost of service for our members. This study will help us better understand the growth we are experiencing on all levels of your electric cooperative in relation to our overall revenue and continually growing expenses as well.

Last, but not least, we are finalizing our plans for our 85th Annual Meeting to be held at the Lennox High School Auditorium on Thursday, June 8, 2023, beginning with our registration and meal at 5 p.m. and the business meeting beginning at 7 p.m. This is your opportunity to exercise your right to vote for your board members of Southeastern Electric Cooperative, Inc., ratify your board's action to change our principal office location, view an Electric Vehicle Car Show, visit with your neighbors/friends, pick up a door prize, enjoy one of our world-famous pork chop dinners and, most importantly, hear more about YOUR Electric Cooperative activities over the past year. In addition to those items, if you stay around for the prize drawings you will be entered for one of several \$500 grand prize drawings. Please take some time to review the materials, details, and information for YOUR Electric Cooperative Annual Meeting that will be contained in the June publication. Thanks again to all our members for all you do to support your cooperative. Think spring, and hopefully you can put away the snow shovel and that tired snow blower for another year!



Progress continues to be made on the expansion at our Sioux Falls office.

**COOPERATIVE
CONNECTIONS****SOUTHEASTERN
ELECTRIC**

(ISSN No. 1531-1058)

General Manager

Brad Schardin

brad@southeastern.coop

Editor

Brett Snymers

brett@southeastern.coop

Board of Directors

Don Heeren, President

Steve Holmberg, Vice President

Johnathan Wildeboer, Secretary

Daryl Terveen, Treasurer

Robert Wollmann

John Ostraat

Chris Hofer

Carlos Hofer

www.southeasternelectric.com

1-800-333-2859

A Touchstone Energy® Cooperative 

@SE_Electric

facebook.com/
southeasternelectric

SOUTHEASTERN ELECTRIC COOPERATIVE CONNECTIONS is published monthly by Southeastern Electric Cooperative, PO Box 388, 501 S. Broadway Ave., Marion, SD 57043-0388 for its members. Families subscribe to Southeastern Electric Cooperative Connections as part of their electric cooperative membership. Southeastern Electric Cooperative Connections' purpose is to provide reliable, helpful information to electric cooperative members on electric cooperative matters and better rural living. Subscription information: Electric cooperative members devote 50 cents from their monthly electric payments for a subscription. Nonmember subscriptions are available for \$12 annually. Periodicals Postage Paid at Marion, SD 57043 and at additional mailing offices.

POSTMASTER: Send address changes to: Southeastern Electric Cooperative Connections, PO Box 388, Marion, SD 57043-0388; telephone (605) 648-3619; fax (605) 648-3778; e-mail sec@southeasternelectric.com

Design assistance by SDREA

SAVE THE DATE

Thursday, June 8, 2023

Join us for Southeastern Electric's Annual Membership Meeting

The annual membership meeting for Southeastern Electric Cooperative has been set for Thursday, June 8, 2023 at the Lennox High School. Tentative plans call for the registration to begin at 5:00 p.m. and the meeting's call to order scheduled for 7:00 p.m.

We are asking any Members with an EV to consider participating in our Second Annual EV Car Show. This car show will take place in conjunction with our annual meeting beginning at 4:30 p.m. at the Lennox High School parking lot on June 8, 2023. Members participating in the EV Car Show with their car will be provided with a \$100 bill credit for attending and showing their EV to our membership that night.

Do not forget to put June 8th on your calendar and attend your cooperative's annual meeting.

Like to Cook? Send us your favorite recipes!

We are looking for original recipes that are a hit at your house. Each month we hold a drawing from the recipes that are submitted for a \$10 credit on the winner's electric account. All recipes submitted will be entered in a yearly drawing for a grand prize at the Annual Membership Meeting held each June.

All recipes we receive are forwarded to SDREA for possible publication in Southeastern Electric Cooperative Connections. Recipes for the May 2023 magazine should be submitted by April 1. You may email your recipes to brett@southeastern.coop. Upcoming recipe topics are dairy in June and desserts in July.

Practicing Electrical Safety Inside and Outside the Home

Electricity is a vital resource South Dakotans depend on daily, but when used unsafely, the consequences can be costly and sometimes even deadly.

Many tragedies involve common items such as power outlets, appliances, power cords, power equipment and extension cords. Sadly, most of these deaths and injuries are preventable.

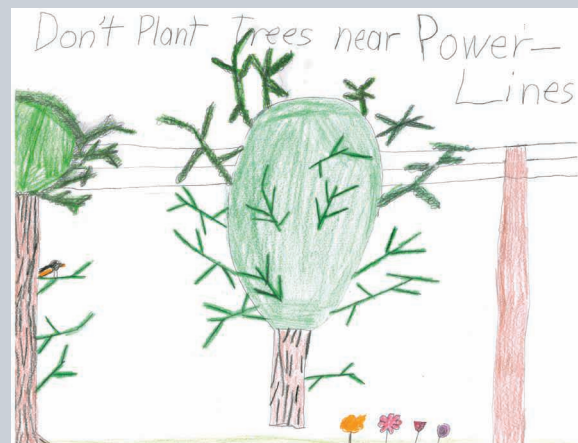
To help reduce electric safety casualties and injuries, South Dakota's electric cooperatives are dedicated to raising awareness of electric safety information to educate people of all ages on the dangers of electricity.

Inside the Home:

- Inspect electrical cords often for broken connectors or fraying. Throw away any worn cords to eliminate the possibility of shock, short circuit or fire.
- Don't overload power outlets.
- The wattage of the bulbs you use in your home should match the wattage indicated on the light fixture. Overheated fixtures can lead to a fire.
- When trying to unplug something from an outlet, pull on the plug, not the cord.
- Keep in mind that turned off appliances are still connected to electricity until they are unplugged. Always unplug appliances before cleaning or repairing.
- Use extension cords only for short-term purposes, and make sure the cord is adequately suited for the amount of electricity it will be transferring.
- Turn off and unplug all portable electrical appliances, like hairdryers, irons and shavers, when you're finished using them.
- Be familiar with the location of your breaker box and make sure the switches are clearly labeled so you can shut off electricity quickly in the event of an emergency.
- Teach children never to put their fingers in electrical outlets and appliances.
- Keep appliances and cords away from children and use plug covers in outlets.

Outside the Home:

- If there is a downed power line nearby, leave the area immediately and notify your cooperative or call 911. If others are around, let them know that they need to stay away.
- Teach children to stay away from power lines and substations and make sure they can recognize "Danger-High Voltage" signs.
- Never use electrical equipment near any wet areas, such as pools or ponds.
- Remember, electricity looks for the shortest, most direct path to ground. A ladder, pole or even a wet kite string touching a power line will give electricity a new, shorter path and if you are holding one of these items, you could become a part of that path.
- "Call Before You Dig." Dial 811 before starting a digging project, and workers will be sent to your home to mark utility lines in your yard. This service is free, and it has the potential to save your life.



Power Line Safety

Annette Tschetter, age 9

Annette Tschetter, age 9, offers a great safety tip for power lines. Planting trees near power lines can be dangerous and problematic. Annette is the daughter of Ryan and Elaine Tschetter, members of Whetstone Valley Electric based in Milbank, S.D.

Kids, send your drawing with an electrical safety tip to your local electric cooperative (address found on Page 3). If your poster is published, you'll receive a prize. All entries must include your name, age, mailing address and the names of your parents. Colored drawings are encouraged.

SMOOTHIE SENSATION



WAKE UP COFFEE SMOOTHIE

Ingredients:

- 1 cup milk
- 1/8-1/4 cup instant coffee granules
- 1 envelope chocolate or vanilla instant breakfast drink mix
- 3 cups ice cubes

METHOD

In a blender, combine all the ingredients except the ice. Blend until well mixed. Add the ice and blend until well mixed and slushy.

Catherine Peterson
Viborg, S.D.

STRAWBERRY SMOOTHIE

Ingredients:

- 2 cups fresh strawberries, stemmed and halved
- 1 cup plain yogurt
- 1/2 cup ice cubes or chips
- 1/2 tsp. ground cardamom
- 1/4 tsp. ginger

METHOD

In a blender, combine all of the ingredients. Blend on high speed until it has a smoothie texture. Makes two 12 ounce glasses.

Dar Duncan
Milbank, S.D.

MINT CHOCOLATE BREAKFAST SMOOTHIE

Ingredients:

- 1 cup ice
- 1/2 medium avocado, peeled, pitted and chopped
- 1/2 cup frozen sliced banana
- 1/2 cup packed baby spinach leaves
- 1/2 cup reduced fat milk
- 1 tablespoon agave nectar
- 1/2 teaspoon Pure Vanilla Extract
- 1/4 teaspoon Pure Peppermint Extract
- 2 tablespoons finely chopped chocolate

METHOD

Place all ingredients except chocolate in blender container; cover. Blend on high speed until smooth. Stir in chocolate. Serve immediately.

mccormick.com

Please send your favorite recipes to your local electric cooperative (address found on Page 3). Each recipe printed will be entered into a drawing for a prize in December 2023. All entries must include your name, mailing address, phone number and cooperative name.

Board minutes

The Board of Directors of Southeastern Electric Cooperative met in Marion on Wednesday, March 1, 2023, with all directors present. Also, present were Manager Brad Schardin, Attorney Mike Nadolski and staff members John Euchner, Jon Wunder and Todd Nelson.

Manager Schardin in his report reviewed with the board the following items:

1. Reviewed the recent employee one-on-one meetings, emergency training exercises and the Basin financials.
2. Discussed the carbon compression issue and the Sioux Falls office addition.
3. Reviewed the circulation folder and various member-related issues.

CFO Jon Wunder reviewed his written report, including the preliminary financial report for January 2023, the budget comparison for 2022, the long-term debt portfolio summary and G&T margin allocations and the kWh tax annual report for 2022.

Operations Manager John Euchner reviewed his written report, which included any close calls, recent safety meetings and outages. He also talked about the projected future services, construction contracts, a new substation request, dash cameras, equipment purchases and the recent MTI job fair.

Member Services and IT Manager Todd Nelson reviewed his written report, annual meeting planning, East River's new rebate database, the Verizon GridWide User Group meeting, disconnects, past due accounts, IT project, cybersecurity and load management.

Attorney Nadolski discussed the Joint Defense and Common Interest Agreement that is included later in the agenda. In addition, Attorney Nadolski informed the board of recent discussions with the Secretary of State related to the South Dakota Secretary of State website. The Secretary of State is in the process

of updating their website to recognize Southeastern as a cooperative.

The board acted on the following motions:

- A motion was made and seconded to approve the consent agenda. Motion carried.
- A motion was made and seconded to accept the management reports as presented. Motion carried.
- A motion was made and seconded to authorize Attorney Nadolski to sign the Joint Defense and Common Interest Agreement on behalf of Southeastern. Motion carried.
- A motion was made and seconded to declare six pieces of equipment as surplus property to be placed on auction rather than traded in. Motion carried.
- A motion was made and seconded to approve the 2023 PURPA Avoided Cost Rate. Motion carried.

- A motion was made and seconded to adopt the Affirmative Action Programs for Minorities and Women, Individuals with Disabilities and Protected Veterans for the calendar year 2023 as presented. Motion carried.

- A motion was made and seconded to authorize Carlos Hofer to attend the SDREA Credentialed Cooperative Director Training (CCD) on behalf of the Cooperative. Motion carried.

- A motion was made and seconded to set the April board meeting for Thursday, April 20, 2023. Motion carried.

Next regular monthly meeting will be held on Thursday, March 23, 2023, at the Marion office.

Energy Efficiency Tip of the Month

This planting season, include energy efficiency in your landscaping plans. Adding shade trees around your home can reduce surrounding air temperatures as much as 6 degrees. To block heat from the sun, plant deciduous trees around the south side of your home. Deciduous trees provide excellent shade during the summer and lose their leaves in the fall and winter months, allowing sunlight to warm your home.

Source: [energy.gov](https://www.energy.gov)



Sioux Falls Office Expansion





HOOKED ON FISHING

A Game, Fish and Parks employee consolidates fish in a raceway at McNenny State Fish Hatchery for loading and stocking.

South Dakota Fish Hatcheries Meet Growing Demand

Frank Turner

frank.turner@sdrea.coop

Fishing guide Dave Spaid, of Pierre, has a passion for helping anglers pull fish out of South Dakota waters. When a customer catches a memorable monster along the banks of the Missouri River, Spaid knows he has had a successful day.

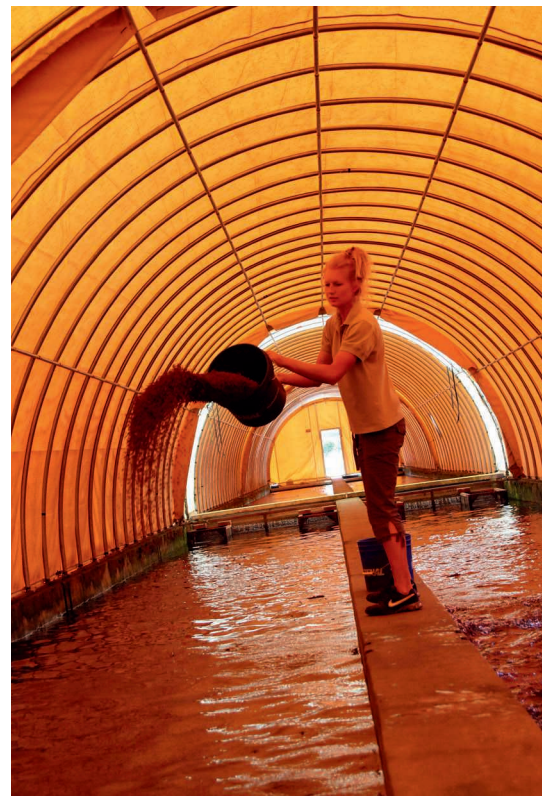
“I basically enjoy watching other people catch fish,” said Spaid, who has been a guide for fishermen from across the Midwest for more than 37 years.

Over the course of his long-standing career, Spaid says he observed more anglers on the water and improved fishing technologies and capabilities, yet fewer sizable fish. “There’s a growing amount of people out there that are fishing every day and having success,” said Spaid. “It puts a detrimental dent in our fishery and sometimes the fish just don’t have a

chance to grow to those bigger sizes.”

According to data from Game, Fish and Parks (GFP), fishing continues to be an important part of South Dakota’s outdoor heritage, confirming Spaid’s suspicions. And while fishing guides, like Spaid, have earned a living by taking fish out of the water, managers of fish hatcheries have taken on the responsibility of putting new fish back in.

Fish Hatcheries administrator Mike Barnes said GFP is being proactive in the development of its three hatchery locations to meet the needs of South Dakota’s anglers. Recent improvements to South Dakota’s three hatcheries located in



Regular feedings help bolster fish before their introduction to South Dakota lakes and rivers.

Spearfish, Rapid City and Waubay have significantly improved the state's abilities to produce and rear mass quantities of fish – everything from walleye to rainbow trout to largemouth bass – for stocking across the state.

The fish produced at these state hatcheries can even bolster South Dakota's larger fisheries, and without them, there would be significantly fewer fish to catch. In 2022, GFP and other entities stocked a total of 66 million fish, including 19 different species, in 138 lakes and streams in South Dakota. Over 60% of the walleye fisheries in South Dakota depend on stocking, and walleye stocking is increasing in Lake Oahe, South Dakota's largest reservoir. Other fisheries, like those for Chinook salmon, rainbow trout, and paddlefish, only exist because of hatcheries.

So how does the state manage to raise millions of fish? When raising walleye, hatcheries collect and fertilize fish eggs collected during the spawning season in the spring. The eggs incubate in upwelling jars, which circulate fresh water and gently roll the eggs. When the eggs hatch,

the small fry are either stocked directly into lakes or kept for further growth in ponds or newly installed re-circulating aquaculture system (RAS) tanks.

Due to the recent addition of RAS technology in 2019, Barnes said it is now possible to grow more fish and different species of fish to sizes never before possible. "Anglers are going to feel a huge impact from what we have done with these new systems, even as soon as this summer," said Barnes. "We are increasing small walleye production, and will be stocking bass at 10 inches or bigger, bluegills at eight inches, and muskies at 16 inches or longer – we've never had the opportunity to grow and stock these species of fish at these sizes before. This is all happening at the same time as increased numbers of walleyes returning from traditional rearing ponds and trout production at record levels. I'm extremely proud of the people I am privileged to supervise."

Rearing fish in RAS is complex, and Barnes compares the process to a factory. The scale of production is massive and energy intensive. Barnes is also the

manager of McNenny Hatchery in rural Lawrence County. As a co-op member of Butte Electric, Barnes said the McNenny hatchery in Spearfish has had consistent support from its local co-op to keep the operation rolling.

"There is no way we could do what we do without reliable electricity," said Barnes. "It's just a tremendous blessing for us to have Butte Electric as our provider. They are just so good to work with and so responsive and helpful."

The state is keen on keeping the momentum rolling. In fact, GFP has plans for a new hatchery facility on SDSU's campus. Increasing production, increasing rearing efficiencies, saving money, developing student interns, and enhancing fisheries education, are all reasons for the new facility. Barnes estimates that the project could be completed within the next three years.

"Keep an eye out for new projects because they are happening and underway," he said. "And at the end of the day, it's all about maximizing the satisfaction of our customers, South Dakota's anglers."



Game, Fish and Parks uses trucks equipped with livewells to stock fish directly into South Dakota fisheries across the state.

Important notice to the members of Southeastern

Directors' elections will take place at the upcoming annual membership meeting by those members present and voting on June 8, 2023 in Lennox South Dakota at Lennox High School.

If you are interested in being a director candidate for the board, contact us for a petition. A candidate must have 15 or more members of their district affix their signatures to the petition. Petitions, which became available Wednesday, Feb. 10, 2023, can be obtained by calling the office at 1-800-333-2859. The petition must be returned and certified before April 21, 2023.

Three directors will be elected for a term of three years. The three-year terms will be from districts one (1), four (4) and seven (7).

- District No. 1 shall consist of Wall Lake, Wayne, Sioux Falls and Splitrock Townships in Minnehaha County, South Dakota.

- District No. 4 shall consist of Delapre West Township in Lincoln County, South Dakota.

- District No. 7 shall consist of Delapre East and Springdale West Townships in Lincoln County, South Dakota.

The role of a director:

- Directors must abide by and uphold the bylaws of the cooperative.
- Directors act as trustees for the assets of the cooperative and protect its assets.
- Directors formulate, approve and review policies to provide guidelines for the cooperative.

- Directors are selected to serve on the boards of East River Electric Power Cooperative and the South Dakota Rural Electric Association.
- Directors are asked to attend educational seminars and represent the cooperative at meetings of associated organizations.
- Directors are asked to remain informed on pertinent legislative issues and discuss the issues with elected representatives.
- Directors need to keep informed on current Rural Utilities Service (RUS) and electric industry happenings and how they may affect the cooperative.
- Directors approve budgets, evaluate cooperative operations and review financial reports, work plans and audits.
- Directors need to be available to the members in their district to respond to members' concerns and questions.

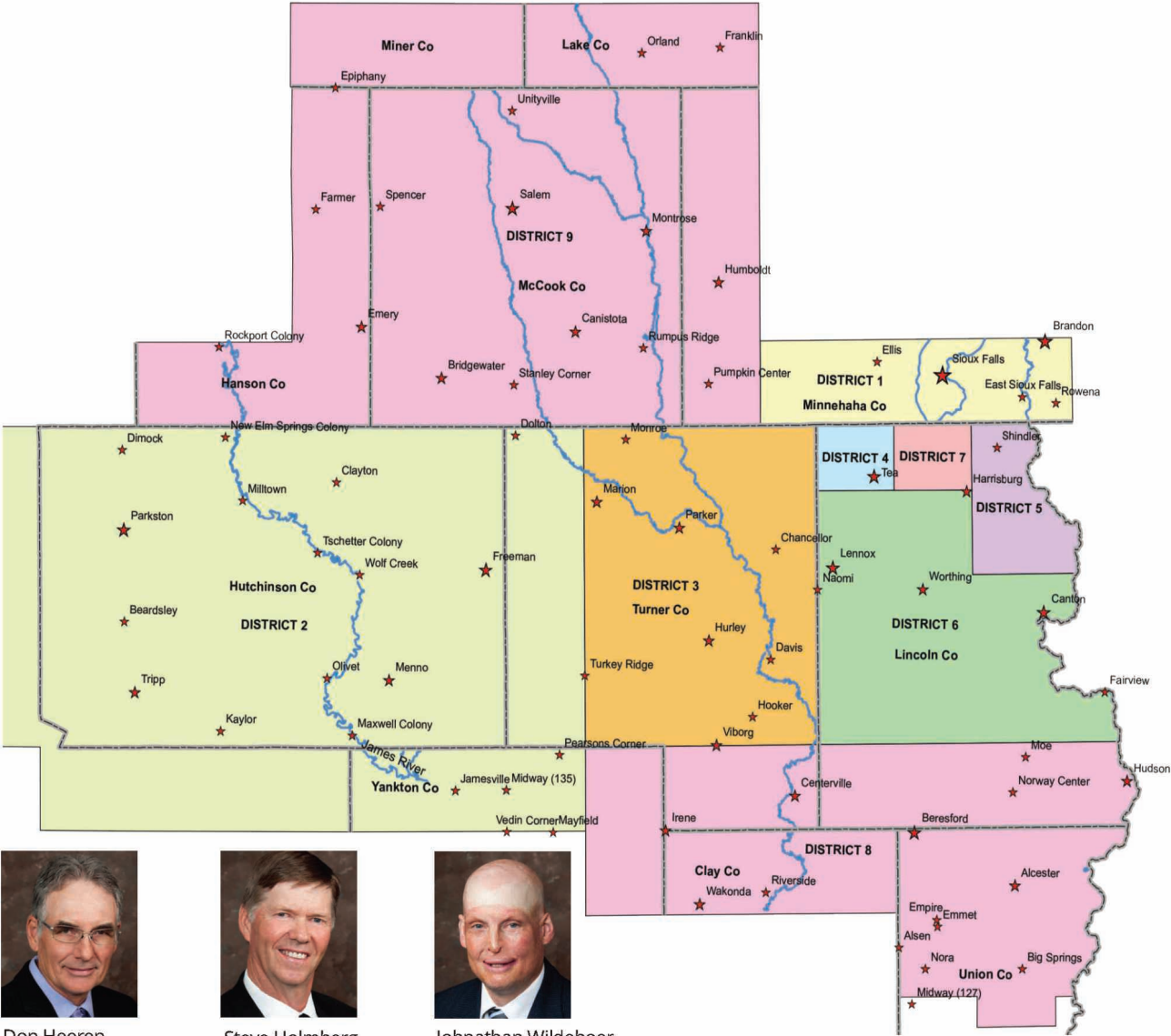
Board meetings usually are held on the third Thursday following the first Monday of each month. Current board meeting times begin at 8:15 am with power supply videos and the business meeting beginning at 8:30 a.m. Many times, the monthly meetings last until mid-afternoon and attendance at various other director meetings are scheduled on a rotational basis by director district. Director's regular duties will require an estimated 25 hours a month relating to cooperative business activities, meetings and associated organization meetings.





A Touchstone Energy® Cooperative

Director voting districts map



Don Heeren
Pres - Dist. 3



Steve Holmberg
VP - Dist. 8



Johnathan Wildeboer
Sec. - Dist. 6



Daryl Terveen
Treas. - Dist. 9



Carlos Hofer
Dist. 1



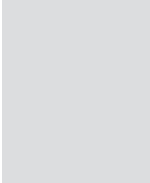
Bob Wollmann
Dist. 2



Chris Hofer
Sec. - Dist. 4



John Ostraat
Dist. 5



Open District
Dist. 7



MOVING STRUCTURES

A home is moved in Fargo, N.D., due to flooding.

Reasons to Move and Methods to Get it Done

Jocelyn Johnson

jocelyn.johnson@sdrea.coop

You found your dreamhouse. It's affordable and everything you ever wanted. The catch? You must move it across town.

It's not an easy thing to do, but moving a complete structure from the past to its future home can be done and is done for the right reasons.

Milbank House Movers, Inc., located in Milbank, S.D., has been in business since 1965 and serves all of South Dakota, North Dakota, and the Mid-Western parts of Minnesota.

Josh Wendland from Milbank House Movers said, "The demand for moving structures remains high across all of our service area...we have multiple crews, that, at times, move multiple houses every week."

A house, sentimental barn or historical

church are all structures that people have moved in South Dakota. Sentiment, safety, time, cost, convenience, and restructuring could all be reasons why this occurs.

Throughout the United States,

intimidating structures are moved regularly – lighthouses, hotels, movie theatres, airport terminals, barges, ships, bridges, grain elevators, houses, libraries, transformers, draglines, and viaducts are a few examples.

"Relocating structures is the world's oldest and largest recycling industry," Wendland stated. "Why people move structures varies greatly, but a few of the most common reasons occur in a



Two buildings are moved from Augustana University campus due to expansion of the college athletics complexes.

vast state like South Dakota. People that would like a home built may have difficulty finding builders that will work in their parts of the state, or the local builders are simply booked out and cannot help in the timeframe that works for them.”

In these circumstances, ready-built companies offer pre-built homes that could be moved to the customer’s site and set it on their basement as if it were built there all along.

A homeowner wanting to upgrade homes in their current location while also wanting to make a profit over the home they currently live in, is another example to move a home. Out with the old and in with the new! This philosophy can be true with barns, buildings, garages, and other types of structures that are in the way of new opportunities, but still hold value.

Flooding is an additional reason why some in the Midwest may want to move their homes to higher ground. Wendland observed that structural movers have seen an increase in the number of requests to elevate houses permanently, so owners

would not have to pay for expensive flood insurance. This move would elevate the long-term value on their home.

“We also work with numerous historical societies to help preserve historic structures, trains, churches, hotels, and schoolhouses by moving them to historical society grounds where they can be saved for future generations to learn from and enjoy,” Wendland stated. “We like to say, Moving the Past to the Present for the Future!”

Things to Consider When Moving a House

Despite professionals making it look somewhat easy, getting from Point A to Point B may not be that simple. It requires constructive planning and forethought. The following are just a few considerations to take before any structure is moved.

1. Size – the bigger the house, the more expensive it is to move.
2. Obstacles – trees, overhead utility lines, bridge weight limitations, traffic signals, and railroad crossings should be considered

with every route taken.

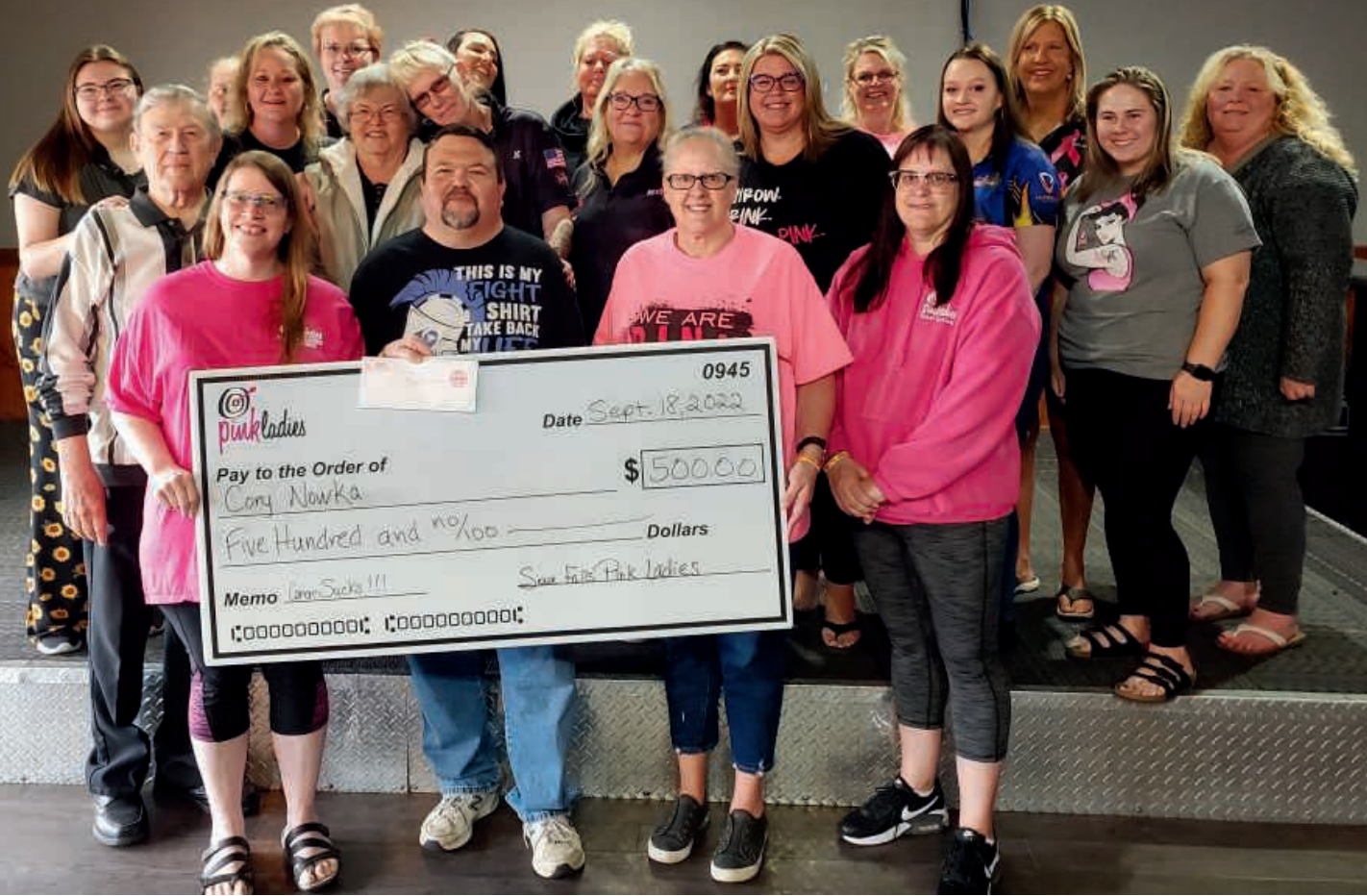
3. Price of moving the house
4. Distance of the move
5. Cost of the new lot
6. Cost to purchase the house or building
7. Fees associated with moving overhead utilities, tree trimming, and any permits or inspections required to move and place the house
8. Fees associated with disconnecting all of the current utilities, HVAC, and electrical and plumbing systems
9. Remodeling costs
10. Financing costs

Moving a structure can be an exciting process if done correctly. It’s saving a piece of history from destruction or putting in something new without the headache of waiting. Whatever the reason behind the move, the ability to do it is astounding. Homes can be saved, history can be preserved, and future options are made more available.



A home is moved due to flooding near Waubay, S.D.

DART LEAGUE



Members of the Sioux Falls Pink Ladies Dart League present a \$500 check to area residents fighting cancer.

PINK LADIES DART LEAGUE Looking to Make a Difference

Frank Turner

frank.turner@sirea.coop

Clad in pink, one nonprofit organization in Sioux Falls is making a difference in their community one dart at a time. The Sioux Falls Pink Ladies Dart League, alongside other Pink Ladies chapters in South Dakota, has a goal to support and raise funds for area community members who are battling cancer and undergoing

treatment.

Although the Pink Ladies Dart League is mostly noncompetitive when it comes to darts, the group is serious in its efforts to assist those fighting cancer. Funds raised by the ladies through league darts and public events regularly help embattled families during their fight with cancer, easing the financial burden of hospital bills, food expenses, gas money or anything else the family might need.

Despite having only 60 members in their chapter, the Sioux Falls Pink Ladies Dart League has significantly impacted their community in the last decade. Through community events, tournaments and league fees, the group has collectively donated more





Even Santa sometimes visits the Sioux Falls Pink Ladies Dart League, gifting presents to families battling cancer.



Sioux Falls Pink Ladies Dart League Logo

than \$130,000 to those impacted by cancer.

“It’s about giving back to our community and giving love and support to cancer patients,” said Sioux Falls Pink Ladies Dart League President Leann Gabel.

When Gabel joined her chapter in 2015, she had no previous experience throwing darts. For her, it was about trying something new, having fun and making a difference.

“It’s about the hearts, not the darts.”

Every year, Pink Ladies chapters from across the state gather in October during cancer awareness month for the Pink Ladies Darts Tournament. Although the sport is a significant component of the Pink Ladies, Gabel emphasized that their goal is about supporting their community. Anyone,

regardless of gender, age or skill, is welcome to join their chapter.

“I came into the chapter never having thrown a dart in my life and I’m still in the lower division when we play tournaments,” said Gabel. “It’s about the hearts, not the darts.”

For Gabel and the rest of the chapter, each donation serves as a reminder of why they participate in the non-profit. Gabel recalled helping a family with five children during Christmas time in 2021.

The dad was struggling with cancer, and while supporting the father and the family, the mother was unable to work. When the family attended one of the chapter’s events, the group gave the family an abundance of gifts, a Hy-vee gift card and cash for the holidays.

“They were so grateful and they started crying and I couldn’t help but cry too,” she said. “I just thought, wow, my heart is full right now. It doesn’t get any better than that, and

with the kind of passion we have in our chapter, you just can’t beat it.”

Charity from The Pink Ladies Darts League goes beyond just the holiday season. The chapter regularly holds fundraising events and supports area families throughout the year. In fact, the chapter’s next benefit event, Kickin’ Cancer Jam, will take place this month on April 16 at the El Riad Shrine in Sioux Falls. The event will feature five different bands and, of course, a dart tournament. All proceeds from the event will go to local families from the Sioux Falls area.

The Sioux Falls Pink Ladies League, however, is not alone in its efforts. Gabel also encouraged people to watch for events around the state and support the Pink Ladies in their mission to support those with cancer.

“People are more than welcome to attend our Kickin’ Cancer Jam,” she said. “It’s all for the community. No one should fight alone.”



April 22, 2023
RiverRat Run
 Gavins Point Recreation Area
 Yankton, SD
 605-660-9483

To have your event listed on this page, send complete information, including date, event, place and contact to your local electric cooperative. Include your name, address and daytime telephone number. Information must be submitted at least eight weeks prior to your event. Please call ahead to confirm date, time and location of event.

MARCH 31-APRIL 2
70th Annual Hayes Play:
Trouble in Tumbleweed
 Hayes Community Hall
 Hayes, SD
 605-280-6556

APRIL 1
Hill City Easter Egg Hunt
 9:45 a.m.
 Visitor Information Center
 Hill City, SD
 605-574-2368

APRIL 1
Lion's Club Easter Egg Hunt
 10 a.m.
 City Park
 Groton, SD
 605-397-8422

APRIL 1
East Dakota Chapter
NWTF 30th Banquet
 Sioux Falls, SD
 605-940-0702

APRIL 2-4
"The Psychic-a Murder
Mystery of Sorts"
Community Theater
Performance
 Town Players Theater
 Watertown, SD
 605-280-6556

APRIL 8
East Dakota Chapter
NWTF 30th Banquet
 Sioux Falls, SD
 605-940-0702

APRIL 8
Easter Egg Hunt for Helping
with Horsepower
 2 p.m.
 Reclamation Ranch
 Mitchell, SD

APRIL 21
Museum After Dark
 7 p.m.
 Children's Museum of
 South Dakota
 Brookings, SD

APRIL 21-22
Junkin' Market Days,
Spring Market
 W.H. Lyon Fairgrounds
 Expo Building
 Sioux Falls, SD

APRIL 22
RiverRat Run
 8 a.m.
 Gavins Point Recreation Area
 Yankton, SD
 (605) 660-9483

MAY 7
Sioux Falls American Legion
Post 15 Pancake Breakfast
 8:30 a.m.-12 p.m.
 S.D. Military Heritage Alliance
 Building
 Sioux Falls, SD

MAY 17
Norwegian Independence
Day
 6 p.m.
 Vivian, SD
 605-222-3296

MAY 20
Buggy Museum Open House
 10 a.m.
 Stockholm, SD
 605-938-4192

MAY 25
Wine Walk
 5 p.m.
 Downtown Businesses
 Aberdeen, SD
 605-226-3441

MAY 27
Back When They Bucked
All-Day Rodeo
 9 a.m.
 Days of '76 Event Complex
 Deadwood, SD
 605-717-7642

Note: Please make sure to call ahead to verify the event is still being held.